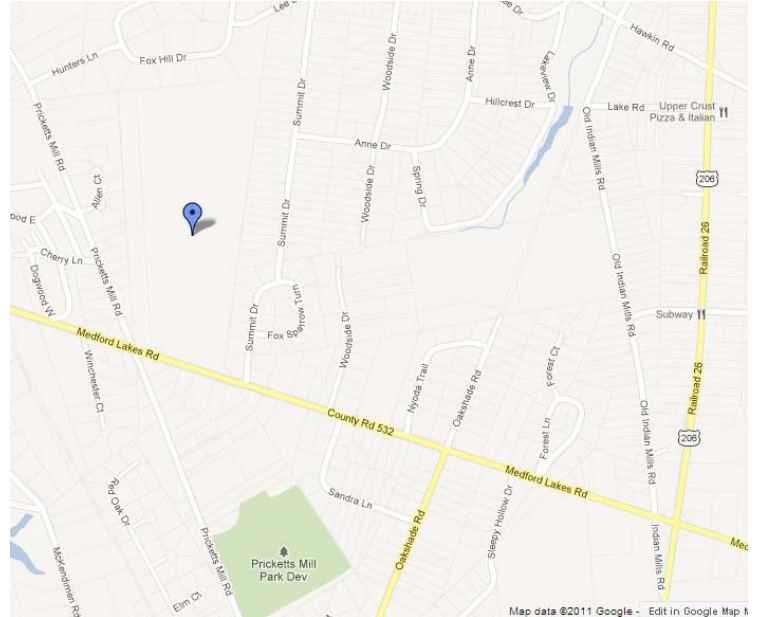
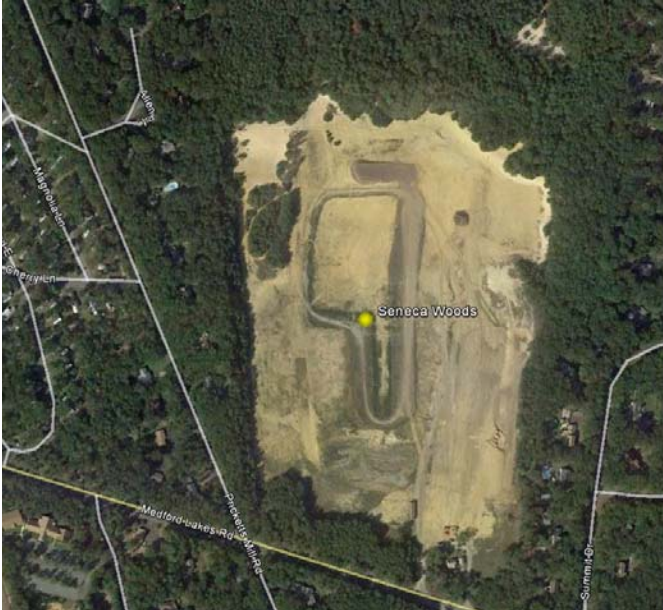


SENECA WOODS



57 Improved, Single Family Detached Lots Township of Tabernacle, Burlington County, New Jersey

Property Description	Total	Unimproved	Improved	Typical Lot Size	Typical Building Setbacks (Front / Side / Rear)
Single Family Detached	57	43	14	1 Acre	60' / 30' / 40'

Location: Tabernacle Twp., Burlington Co., NJ
Zip code: 08088
School District: Tabernacle / Lenape
Approving Jurisdiction: Tabernacle Township
Approval Status: Approved
Date Recorded:
Improvement Status: 14 lots partially Improved
Approved Amenities: None
Sewer: Septic
Water: Well

Lot & Parcel Numbers: Block 202.02, Lots 10 & 11

Property Description: This property consists of 57 partially improved single family detached lots off of Medford Lakes Road in Tabernacle. The site is located just south of the intersection of Route 206 and Route 70 and offers excellent accessibility to New Jersey Shore Points as well as Center City, Philadelphia.

Atlantic Five Realty

2301 E Evesham Rd., Building 800, Suite 113,
Voorhees, NJ 08043

Contact Us: Office: (856) 772-0392 ~ Cell: (609) 605-7122

Email: david@atlanticfive.com