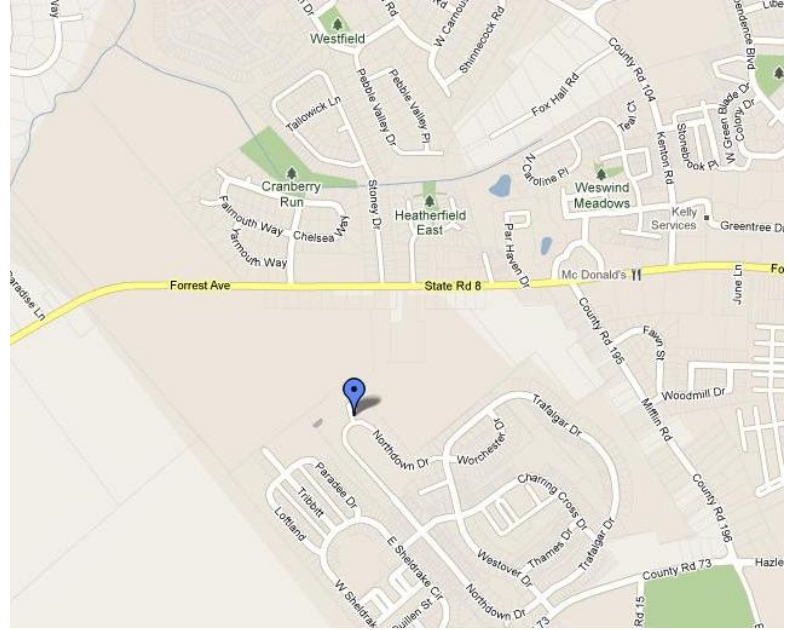
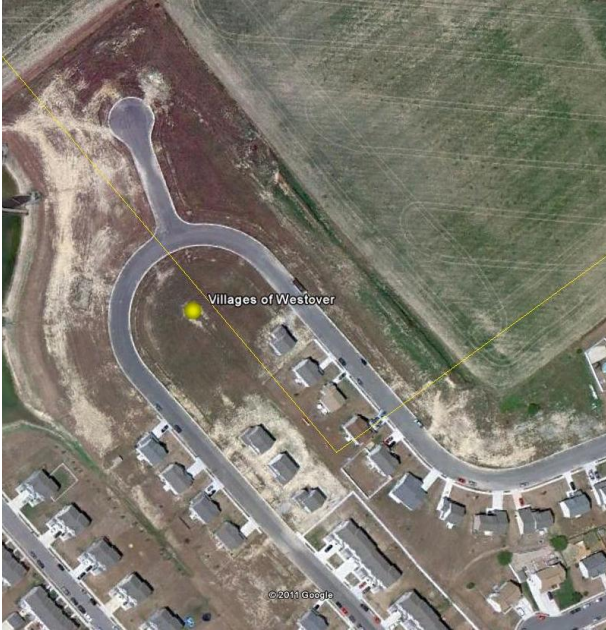


VILLAGES OF WESTOVER



33 Improved, Single Family Detached Lots
 Dover, Kent County, Delaware

Property Description	Total	Unimproved	Improved	Typical Lot Dimensions	Typical Building Envelope
Single Family Detached	33	0	33	70' x 108'	50' x 53'

Location: Dover, Kent County, DE
School District: Capital School District
Approving Jurisdiction: City of Dover
Approval Status: Approved / Recorded
Date Recorded: 4/12/2004
Improvement Status: Fully Improved
Approved Amenities: None
Sewer: City of Dover
Water: City of Dover

Lot & Parcel Numbers: Lots 365 to 388, 393, 394, 417 to 423

Property Description: This property is made up of the sixth and final phase of The Villages of Westover and contains 33 improved, single family lots. The site is located off of Hazletville Road (County Road 73) just west of Downtown Dover and is only minutes away from Exit 98 of Delaware Route 1.

Atlantic Five Realty

2301 E Evesham Rd., Building 800, Suite 113, Voorhees, NJ 08043

Contact Us: Office: (856) 772-0392 ~ Cell: (609) 605-7122

Email: david@atlanticfive.com

